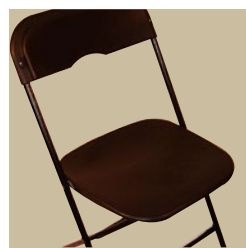


# MIDAS EVENT SUPPLY

## PARTY & EVENT EDITION

+ Custom Manufacturing

**Product SOLUTIONS**  
that **Build** your **BUSINESS**



# TABLE OF CONTENTS

## Folding Chairs

The Classic Series (wood)..... 1  
 The Revolution Series (resin).....2  
 The Champ Series (plastic/steel) ..... 3-4  
 Customized Chair Covers & Pads ..... 1-2

## Stacking Chairs

The Legacy Series Chiavari (wood).....5, 7  
 The Legacy Series Chiavari (aluminum) ..... 6-7  
 The Legacy Series Chiavari (resin) ..... 6-7  
 The Banquet Hall Series (steel) .....8  
 The Chateau Chair (wood) .....8  
 The Oval Back Chair (wood) .....8

## Barstools

The Legacy Series Chiavari (Wood) .....9  
 The Contemporary Series (steel) ..... 10

## Custom Table & Chair Covers

Custom Table Cover ..... 10  
 Custom Chair Seat Pad ..... 10  
 Custom Chair Back Cover..... 10

## Cocktail Tables

The Elite Cocktail Table (wood/blowmold/laminate) ... 11, 14

## Folding Tables

The Reliant Elite (wood).....12  
 The Rental Elite (wood).....13  
 The Laminate Elite ..... 14  
 The Rental Elite Light (resin) ..... 14  
 The Caterer Elite (wood).....15  
 The Expo Elite (wood) .....15  
 The Card Elite (wood) .....15

## Forest Collection

Wood Stacking Chair ..... 16-17  
 Wood Folding Chair ..... 16-17  
 Wood Stacking Barstool..... 16-17  
 Wood Benches..... 16-17  
 Wood Folding Tables ..... 16-17  
 Protective Covers ..... 16-17

## Carts

Folding Chair Carts ..... 18-20  
 Folding Table Carts ..... 18-20  
 Pedestal Table Carts ..... 18-20  
 Rack Stack N' Go ..... 19-20

## Umbrellas

Market Umbrellas (wood) .....21  
 Market Umbrellas (aluminum) .....21

## Plate Crates

The Renaissance Collection ..... 23

## Stanchions

Sign Holders ..... 25

## Coat Racks

Coat Trees ..... 25

## Custom Manufacturing

Testing Protocols, Certifications, Insurance ..... 28

## The Midas Story



## WOOD FOLDING CHAIRS

### The Classic Series

The CLASSIC style wood folding chair is the proven standard in the rental industry. The sturdy hardwood frame construction is engineered for heavy special event applications.

#### Product Features:

- Hardwood Frame is a proven performer
- Joints are nailed and glued for added product life
- High Gloss, super durable polyester paint or stain/poly finish for even coverage and reduced maintenance
- Special metal support bracket for additional weight capacity and strength

#### Product Details:

- 4 pcs per carton
- Dimensions - 30.5" x 18" x 15.38" (Top of chair to floor x Top of seat to floor x Width of seat)
- Weight - 9.75 lbs ea.
- Seat pad dimensions - 14.38" x 12.75" x 0.25"

#### Shipping Details:

- Carton dimensions - 36" x 19" x 10"
- Carton weight - 42 lbs
- Shipping class - 92.5
- Pallet quantity - 27 ctns 54" x 37" x 87"
- FCL quantity - 2860 floor loaded



Item no.	Description
111001	White wood (paint) with a white vinyl seat pad
111002	Black wood (paint) with a black vinyl seat pad
111003	Natural wood (stain) with a white vinyl seat pad
111004	Natural wood (stain) with a tan vinyl seat pad
111007	Mahogany wood (paint) with a black vinyl seat pad
111008	Fruitwood (stain) with a tan vinyl seat pad
111085	Fruitwood (stain) with a chocolate brown vinyl seat pad
Custom	Custom colors available on special request

Parts & Accessories	
111101	Replacement white seat pad for CLASSIC series
111102	Replacement black seat pad for CLASSIC series
111104	Replacement tan seat pad for CLASSIC series
111108	Replacement chocolate brown seat pad for CLASSIC series
112201	Chair Saver Bag for CLASSIC series
112601	Plastic side caps for CLASSIC folding chair
143120	Custom Logo Chair Cover Back for resin/wood folding chair
Custom	Custom Logo Chair seat pad for wood folding chair
131901	Standard Chair Cart (4" wheels) for wood folding chairs

See Pages 14, 18-20 for more accessories

#### Wood Color Choices:



#### Seat Pad Color Choices:







## RESIN FOLDING CHAIRS

### *The Revolution Series*

The design and look are CLASSIC but the materials are not. Designed for a classic look and rugged use; this low-maintenance chair is a product you will depend on for inside and outside applications.

#### Product Features:

- UV stabilized resin surface will not yellow over time. Independent lab tested
- Ideal for any occasion and excels in the outdoors
- 100% polypropylene with high luster finish that looks great today and will look great for many years to come
- No paint means less maintenance
- Steel seat bar and lock tight design that ensures customer safety and stability
- Efficient nesting design stacks compactly for easy transportation and storage (carts available)
- Engineered for heavy special event applications
- Static load tested at 1100 lbs
- Seat pad is replaceable with ventilation slots on the underside to help keep moisture out

#### Product Details:

- 4 pcs (adult), 5 pcs (children) per carton
- Dimensions - 30.75" x 18.38" x 15.13" (adult), 20.5" x 12.25" x 11.75" (children) (Top of chair to floor x Top of seat to floor x Width of seat)
- Weight - 10.5 lbs ea. (adult), 3.5 lbs ea. (children)
- Seat pad - 13" x 12.5" x 0.5"

#### Shipping Details:

- Carton dimension - 36" x 18" x 10"
- Carton weight - 45 lbs (adult), 19.5 lbs (kids)
- Shipping class - Shipping class - 92-100
- Pallet quantity - 27 ctns - 54" x 37" x 87"
- FCL quantity - 2912 floor loaded

Item no.	Description
143001	Resin White Folding Chair
143002	Resin Black Folding Chair
143003	Resin White Children's Folding Chair
143007	Resin Mahogany Folding Chair
143010	Resin White Folding Chair with slatted back and seat
Custom	Custom colors on special request

Parts & Accessories	
143101	Replacement Seat Pad (White) for Resin Folding Chair
143102	Replacement Seat Pad (Black) for Resin Folding Chair
111115	Custom Logo Chair Seat Pad for resin folding chair
143120	Custom Logo Chair Cover Back for resin/wood folding chair
143201	Cleaning Solution for resin folding Chair
131801	Stacked Chair Saver bag for Resin Chairs
131901	Standard Chair Cart for easy storage & transportation of resin chairs
131902	Heavy Duty Chair Cart with 5" wheels
281000	Rack Stack N' Go series - Chair Cart
280326	RACK STACK N' GO - Chair Cart Cover



#### Color Choices:



## PLASTIC/STEEL FOLDING CHAIRS

### *The Champ Series*

You are likely to call it dependable, versatile and built like a tank - We call it the CHAMP.

This chair has what it takes to be the cornerstone of your inventory. It is built to last with maintenance free rivets and foot caps that stay put.

Available in the colors you need and priced for a quick ROI.

Concerned about durability and safety? We are too - that's why we test every production run on the factory floor using U.S. ANSI BIFMA standard guidelines. (more information available on request)

#### Product Features:

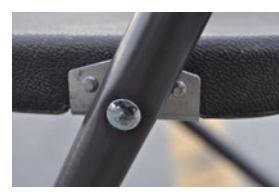
- 3/4" tubular steel design is powder-coated to reduce rusting
- Bent leg design for comfortable dining height seating
- Galvanized rivets will hold tight year after year (no tightening required)
- 100% virgin plastic (no reground materials) seat & back
- Efficient nesting design stacks compactly for reduced storage requirement and will interstack with most other brands

#### Product Details:

- 8 pcs per carton (CHAMP), 8 pcs per carton (FANBACK)
- Dimensions - 31.75" x 17.62" x 15.62" (CHAMP), 35" x 17.5" x 15.75" (FANBACK)
- Weight - 7.45 lbs ea. (CHAMP) 7.5 lbs ea. (FANBACK)

#### Shipping Details:

- Carton is 41" x 11" x 19" (CHAMP), 44" x 12" x 19" (FANBACK)
- Carton weight - 63 lbs (CHAMP) 65 lbs (FANBACK)
- Shipping Class - 92 (CHAMP & FANBACK)
- Palletized quantity: 27 ctns - 60" x 41" x 93" (CHAMP), 22 ctns - 56" x 48" x 91" (FANBACK)
- FCL quantity - 4860 floor loaded (CHAMP) 4404 floor loaded (FANBACK)



#### Color Choices:



Triple riveted for additional strength



### The Champ Series (continued)



Item no.	Description
131001	Wedding White seat & back on white frame
131002	Black seat & back on black frame
131003	Bright White seat & back on white frame
131004	Burgundy seat & back on light grey frame
131005	Blue seat & back on blue frame
131032	Light Grey seat & back on grey frame
131033	Charcoal Grey seat & back on grey frame
131034	Brown seat & back on bronze (brown) frame
131036	Beige seat & back on beige frame
131037	Neutral seat & back on neutral frame
Custom colors	Customs colors for both frame & seat/back available
Champ Fanback Chairs	
133001	Wedding White seat & back on white frame
133002	Black seat & back on black frame
133003	Bright White seat & back on white frame

Custom Chrome – Chrome Frame available by special order.

Parts & Accessories	
131101	Standard WEDDING WHITE Rubber Chair Frame Tips
131102	Standard BLACK Rubber Chair Frame Tips
131103	Standard BRIGHT WHITE Rubber Chair Frame Tips
131110	Standard BROWN Rubber Chair Frame Tips
131114	Standard LIGHT GREY Rubber Chair Frame Tips
131116	Standard BEIGE Rubber Chair Frame Tips
131133	Standard CHARCOAL GREY Rubber Chair Frame Tips
131137	Standard NEUTRAL Rubber Chair Frame Tips
131120	Six sided BROWN Rubber Chair Frame Tips
131121	Six sided WEDDING WHITE Rubber Chair Frame Tips
131122	Six sided BLACK Rubber Chair Frame Tips
131123	Six sided BRIGHT WHITE Rubber Chair Frame Tips
131124	Six sided LIGHT GREY Rubber Chair Frame Tips
131125	Six sided CHARCOAL GREY Rubber Chair Frame Tips
131126	Six sided BEIGE Rubber Chair Frame Tips
131127	Six sided NEUTRAL Rubber Chair Frame Tips
131901	Standard Chair Cart (4" wheels) for Champ Chairs
131902	Heavy Duty Chair cart (5" wheels) for Champ Chairs
131211	Standard Chair cart (4" wheels) for Champ Fanback Chairs
131601	Chair Connectors - Ganging Clip (to attach polyfolds together)
131801	Stacked Chair Saver Bag for Polyfolds
281000	Rack Stack N' Go series Chair cart
280326	RACK STACK N' GO - Chair Cart Cover



### CHIAVARI BALLROOM CHAIRS The Legacy Series (wood)

Combining the vintage design styling and elegance your clients demand with proven engineering that will exceed the rugged demands of the rental industry.

#### Product Features:

- Carefully selected aged beechwood is carved into elegant details that can not be achieved by resin
- Stackable design maximizes storage/transport efficiency
- Mechanical joints keep chair rental ready
- Solid wood seat will not warp or crack
- Attractive stain and gloss finishes makes the wood Chiavari the only choice for upscale events. Resin just doesn't match its elegance
- Ships Assembled

### BOLTS vs SCREWS? No Contest!

Screws don't belong in your Chiavari Chairs! For the same reason they don't belong in your plywood tables. Over time, and with repeated use, screws will inevitably loosen and require additional maintenance. The Midas Legacy Chiavari Chair is equipped with Bolted Mechanical Joints where a wood ballroom chair needs it most. This allows repeated tightening without the "glue and toothpick trick".

#### Product Details:

- 5 per carton (Assembled)
- Dimensions - 36.5" x 17.63" x 15.75" (Top of chair to floor x Top of seat to floor x Width of seat)
- Weight - 9 lbs ea.

#### Shipping Details:

- Carton Dimension: 61" x 25" x 19"
- Carton Weight: 55 lbs
- Shipping Class: 250
- Pallet quantity: 32 chairs – 48" x 40" x 95"
- FCL quantity: 1000 floor loaded



#### Wood Chair Color Choices:



Item no.	Description
122001	Assembled white (paint) Chiavari Ballroom Chair
122002	Assembled black (paint) Chiavari Ballroom Chair
122003	Assembled natural (stain) Chiavari Ballroom Chair
122004	Assembled whitewash (paint) Chiavari Ballroom Chair
122005	Assembled gold (paint) Chiavari Ballroom Chair
122006	Assembled silver (paint) Chiavari Ballroom Chair
122007	Assembled mahogany (paint) Chiavari Ballroom Chair
122008	Assembled fruitwood (stain) Chiavari Ballroom Chair
Custom	Custom colors and finishes on request

Accessories: See Page 7



### The Legacy Series (aluminum)

Lightweight and durable with a powdercoat finish, our aluminum ballroom chairs combine styling and ease of use for upscale events.

#### Product Features:

- Strong, one piece welded construction
- Weighs only 6.5 lbs for ease of transport, stacking & set up
- 5 year structural warranty

#### Product Details:

- 5 per carton
- Dimensions - 36.5" x 17.25" x 15.62" (Top of chair to floor x Top of seat to floor x Width of seat)
- Weight - 6.5 lbs ea.

Item no.	Description
121211	White (powdercoat) Chiavari Ballroom Chair
121212	Black (powdercoat) Chiavari Ballroom Chair
121215	Gold (powdercoat) Chiavari Ballroom Chair
121216	Silver (powdercoat) Chiavari Ballroom Chair
121217	Mahogany (powdercoat) Chiavari ballroom Chair



### The Legacy Series (resin)

Outdoor friendly, the resin Chiavari broadens usage for event professionals. Keep the same classic Chiavari look and reduce your maintenance costs with our durable resin Chiavari ballroom chairs.

#### Product Features:

- Strong & durable construction
- Weighs 12 lbs ea.

#### Product Details:

- 5 per carton
- Dimensions - 36.25" x 17.25" x 15.62" (Top of chair to floor x Top of seat to floor x Width of seat)

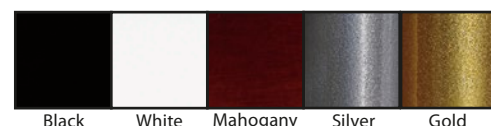
Item no.	Description
121000	Clear (Ice) Chiavari Ballroom Chair
121010	Clear (Ice) with Diamond back Chiavari Ballroom Chair
121011	White Chiavari Ballroom Chair
121012	Black Chiavari Ballroom Chair
121015	Gold Chiavari Ballroom Chair
121016	Silver Chiavari Ballroom Chair
121017	Mahogany Chiavari Ballroom Chair

Also available in Unibloc one piece construction (custom order)

For matching Chiavari Barstools, please go to Page 9

Accessories: See Page 7

#### Aluminum Chair Color Choices:



#### Resin Chair Color Choices:



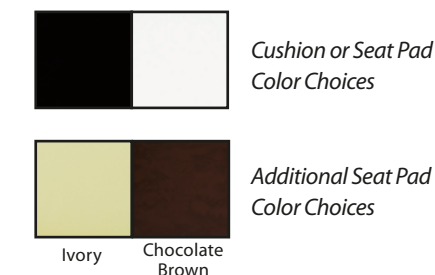
#### Accessories for All Legacy Series Chairs

Parts & Accessories	
121101	White Chiavari cushion with Velcro tabs
121102	Black Chiavari cushion with Velcro tabs
121107	Dark brown Chiavari cushion with velcro tabs
121109	Ivory Chiavari cushion with Velcro tabs
121401	White Chiavari cushion with 12" ties
121402	Black Chiavari cushion with 12" ties
121407	Dark brown Chiavari cushion with 12" ties
121409	Ivory Chiavari cushion with 12" ties
121201	Chiavari Chair Saver Protective Cover
121301	Wood Base Seat pad - White (Vinyl)
121302	Wood Base Seat pad - Black (Vinyl)
121304	Wood Base Seat Pad - Tan (Vinyl)
121308	Wood Base Seat pad - Chocolate Brown (Vinyl)
121309	Wood Base Seat pad - Ivory (Vinyl)
121311	Wood Base Seat pad - White (Fabric)
121312	Wood Base Seat pad - Black (Fabric)
121319	Wood Base Seat pad - Ivory (Fabric)
121310	Sm. Chiavari Cushion Bag (holds 25) - custom screening available
121313	Lg. Chiavari Cushion Bag (holds 50) - custom screening available
121316	NEW Chiavari Wood Base Seat Pad Bag (holds 20) - custom screening available
121100	Chiavari cushion - foam only, no cover
121121	Water Resistant Outdoor cushion - White (velcro)
121421	Water Resistant Outdoor cushion - White (ties)
121700	Chiavari Chair Feet (set of 4)

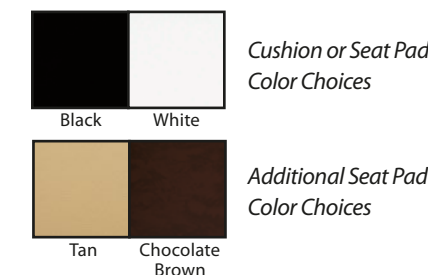
#### Chiavari Cushions:

- Feature zippered pouch, dual sided piping and 2" foam inserts
- Cushions - 0.75 lbs ea., shipped bulk
- Shipping class - 300
- Dimensions of chair saver bag - 35" x 15.5" x 16.5" (Top of bag to floor x Top of seat seam to floor x Width of seat bag)
- Dimensions of chair feet - 1.75" diameter

#### Cushion Color Choices:



#### Wood Base Seat Pad Color Choices:



See Page 17 for more information





## SPECIAL ORDER CHAIRS

### *The Chateau Chair & The Oval Back*

The Chateau is also referred to as the Versailles or the White House chair. Both the Chateau and the Oval Back are elegant alternatives to the industry standard Legacy style ballroom chair.

#### Product Features:

- Stackable design maximizes storage/transport efficiency
- Mechanical joints keep chair rental ready
- Solid wood seat will not warp or crack
- Attractive gloss finish
- Ships assembled

#### Product Details:

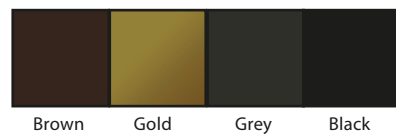
- Chair dimensions - 35" x 17.13" x 15" (Chateau), 36.5" x 17.13" x 15.5" (Oval) (Top of chair to floor x Top of seat to floor x Width of seat)
- Weight - 8.5 lbs ea. (Chateau), 9.25 lbs ea. (Oval)

#### Shipping Details:

- Shipped individually, nested

Item no.	Description
151003	Chateau Chair in Natural
151005	Chateau Chair in Gold
151006	Chateau Chair in Silver
151007	Chateau Chair in Mahogany
151008	Chateau Chair in Fruitwood
125005	Oval Back Chair in Gold

#### Metal Frame Options:



#### Fabric Options:



#### Vinyl Options:



#### All Chairs Shipped to Order

Choose a **frame design, frame color & fabric / vinyl type** OR

Contact us at **888-250-3113 ext 30**, for **specific requirements** or a **match of your existing chairs**.

#### Note: Special Order Guidelines

Lead time is minimum 8 weeks & will be confirmed at time of order. Deposit of 50% required for all special orders.

## *The Banquet Hall Series*

The proliferation of upholstered steel framed banquet chairs in use at banquet halls, restaurants, convention centers and other event locations throughout the country underscores how rugged these products perform under daily use. Our special order platform allows customers to pick their frame and their fabric for greatest flexibility. Or you can provide us with a sample of your existing inventory and we will quote you a finished copy.

Midas are THE specialists in event equipment manufacturing for custom designs.

#### Product Features:

- 16 gauge heavy duty powder coated double braced steel frame for rugged applications
- Static load tested exceeded 500 lbs
- Structural warranty - 5 years
- Premium fabrics for attractive and high rub resistance
- 2.5" thick furniture foam cushion for maximum comfort
- Bumper guards for stacking support

#### Product Details:

- 12 lbs
- Dimensions: 17.25" x 20.25" x 36.5"(H)

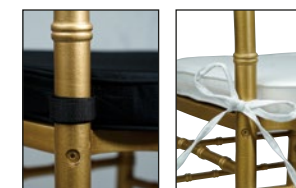
#### Shipping Details:

- Shipped individually, nested

#### Frame Design Options:



Accessories: See Page 7



Chiavari Cushion Bag (holds 50 Cushions)

## BARSTOOLS

### *The Legacy Series*

The perfect compliment to our LEGACY Chiavari ballroom chair. Our Chiavari barstools are crafted to the same meticulous high standards as our Chiavari chairs. They are a perfect match in their design & functionality.

#### Product Features:

- Carefully selected aged beechwood is carved into elegant details that can not be achieved by resin or metal materials
- Stackable design maximizes storage/transport efficiency
- Mechanical joints will keep chair ready to rent and out of the shop
- Concealed threaded steel rods provide superior stability
- Solid wood seat that will not warp or crack
- Attractive gloss finish makes the wood Chiavari barstool the only choice for upscale events. Resin just doesn't match it's elegance.
- Ships assembled

#### Product Details:

- 2 per carton (ASSEMBLED)
- Stool Dimensions - 46" x 29.75" x 15.75" (Top of stool to floor x Top of seat to floor x Width of seat)
- Weight - 12 lbs ea.

#### Shipping Details:

- Carton Dimensions - Carton Dimensions - 61" x 26" x 19"
- Carton Weight - 31 lbs
- Class - 250 (Assembled)
- Pallet quantity - 16 pcs - 48" x 40" x 96"

Item no.	Description
123001	White (paint) Chiavari Ballroom Barstool
123002	Black (paint) Chiavari Ballroom Barstool
123003	Natural (stain) Chiavari Ballroom Barstool
123005	Gold (paint) Chiavari Ballroom Barstool
123006	Silver (paint) Chiavari Ballroom Barstool
123007	Mahogany (paint) Chiavari Ballroom Barstool
123008	Fruitwood (stain) Chiavari Ballroom Barstool
Parts & Accessories	
121101	White Chiavari cushion with Velcro tabs
121102	Black Chiavari cushion with Velcro tabs
121109	Ivory Chiavari cushion with Velcro tabs
121401	White Chiavari cushion with 12" ties
121402	Black Chiavari cushion with 12" ties
121409	Ivory Chiavari cushion with 12" ties
121700	Chiavari Chair Feet (set of 4)
See Page 7 for more accessories	

#### Barstool Color Choices:





### The Contemporary Series

A variety of black barstool configurations for different event formats.

#### Product Features:

- Seat styles are all padded with vinyl covers for comfort and durability
- Swivel styles provide enhanced accessibility
- Powder coated frames for scratch resistance
- Frames constructed with 16 gauge steel for extra strength
- Contemporary barstools without back are stackable

#### Product Details:

- Contemporary with back & swivel seat: 38.5" x 29" x 21" (Top of barstool to floor x Top of seat to floor x Width of seat) weight: 12.5 lbs ea.
- Contemporary with swivel seat, no back: 30.75" x 14.5" (Top of barstool to floor x Width of seat) weight: 10 lbs ea.
- Contemporary non swivel seat, no back: 29.75" x 14.5" (Top of barstool to floor x Width of seat) weight: 8 lbs ea.

#### Shipping Details:

- Carton Dimensions - Contemporary with back & swivel seat (2pcs): 29" x 22" x 13" (weight: 26 lbs)
- Carton Dimensions - Contemporary with swivel seat, no back (4pcs): 60" x 18" x 18" (weight: 45 lbs)
- Carton Dimensions - Contemporary non swivel seat, no back (4pcs): 29" x 22" x 13" (weight: 37 lbs)

Item no.	Description
162001	Swivel Black Barstool w/ Back
163000	Swivel Stacking Black Barstool (no back)
164000	Fixed Stacking Black Barstool (no back)
Parts & Accessories	
162101	Plastic side caps for Contemporary Black Barstool
162102	Plastic Feet caps for Contemporary Black Barstool

### Custom Table & Chair Seat/Back Covers

Embroidered table and chair covers for your very special events

#### Product Features:

- Durable polyester canvas construction with twin zippers
- Available for 6' and 8' banquet configurations
- Embroidered Company name, logo or other special image \* art file required \*

#### Product Details:

- Custom order with company provided details requires 30-60 days for delivery
- Dimensions - fits 6' and 8' banquets - 29" drop

Item no.	Description
111115	Custom Chair Seat Pad for resin folding chair
143120	Custom Chair Cover Back for resin folding chair
250503	Custom Table Cover for 6' banquet table
250504	Custom Table Cover for 8' banquet table
250505	Custom Table Cover for Serpentine table



### The Elite Cocktail Table

Midas is one of the rental industry's largest suppliers of wood pedestal tables in the U.S. The combination of quality components and low factory direct pricing is unbeatable. Even our competition buys from us! From the smooth finished tops to the feet that stay on, this table never gives up.

The same great plywood tops as our folding tables with quality steel and resin components. You have the flexibility to build your own table and/or buy just what you need.

#### Product Features:

- 3/4" Void Free Solid Plywood top
- UV Poly Coat on top and bottom
- Extra Thick Bull-nose Edge- BLACK
- Available in 24", 30", and 36" round or square tops
- Chrome finished columns available in 30" and 42" height and Adjustable option
- 28" Brushed Aluminum Base provides stable support
- Non- Marking glides available in plastic or metal and will stay put!
- Order by the complete table or by component
- Complete Tables: Include Top/ Metal Coupler/ 28" Base/ Column

Item No.	Description	Weight*	Carton dimensions	Pallet Quantity
210000	36" Round Pedestal Table - w/30" Tall Post	25 lbs	6" x 37" x 37"	30
211000	36" Round Pedestal Table - w/42" Tall Post	26 lbs	6" x 37" x 37"	30
212000	30" Round Pedestal - w/30" Tall Post	20 lbs	6" x 31" x 31"	30
213000	30" Round Pedestal Table - w/42" Tall Post	21 lbs	6" x 31" x 31"	30
214000	24" Round Pedestal - w/ 30" Tall Post	16.5 lbs	6" x 31" x 31"	30
215000	24" Round Pedestal - w/ 42" Tall Post	18 lbs	6" x 31" x 31"	30
280000	Standard Pedestal Table Tower Cart for 30" table tops (holds 10 complete sets)	150 lbs	48" x 36" x 73"	1
280001	Standard Pedestal Table Tower Cart for 36" table tops (holds 10 complete sets)	159 lbs	48" x 44" x 73"	1
280002	Standard Pedestal Table Tower Cart for 24" table tops (holds 10 complete sets)	128 lbs	36" x 30" x 90"	1

See Page 19-20 for more Carts

#### Pedestal Table Components/Accessories

Item No.	Description	Pcs/Ctn	Wt/Ctn	Ctn dimensions
200100	28" 4-prong table base (aluminum)	10	42 lbs	21" x 21" x 27"
200130	28" 4-prong table base w/ adj.feet (aluminum)	10	46 lbs	21" x 21" x 27"
200101	Plastic base glides	bulk	N/A	N/A
200110	Metal base glides	bulk	N/A	N/A
200200	Mounting coupler (metal)	bulk	N/A	N/A
200210	Mounting coupler (resin) White	bulk	N/A	N/A
200212	Mounting coupler (resin) Black	bulk	N/A	N/A
200300	Table post for 30" high tables	10	25 lbs	29" x 12" x 6"
200399	Adjust. table post for 24", 30" & 42" heights	10	41 lbs	29" x 6" x 11"
200400	Table post for 42" high (bar high)	10	37 lbs	41" x 11" x 5"
200500	24" Round plywood table top	5	45 lbs	25" x 26" x 6"
200600	30" Round plywood table top	5	53 lbs	31" x 31" x 6"
200610	30" Round blowmold table top	2	19 lbs	32" x 32" x 7"
200700	36" Round plywood table top	5	75 lbs	38" x 38" x 6"
200800	36" Square plywood table top	5	100 lbs	38" x 38" x 6"
200810	36" Round blowmold table top	2	30 lbs	38" x 38" x 6"
200900	24" Square plywood table top	5	46 lbs	26" x 26" x 6"
200910	30" Square plywood table top	5	68 lbs	32" x 32" x 6"
281001	Rack Stack N' Go series - Pedestal (wood)	bulk	298 lbs	n/a
281005	Rack Stack N' Go series - Pedestal (blowmold)	bulk	268 lbs	n/a
280326	Rack Stack N' Go Cart Cover	bulk	N/A	N/A

\* weight rounded to nearest lb.

See Page 14 for more accessories



See Page 17 for more information



## ELITE SERIES WOOD FOLDING TABLES

The Midas Elite Table Series combine uncompromised quality with the most popular features available. Smooth finished plywood tops along with folding leg options makes this the most versatile table line on the market today. If chairs are the cornerstone of your inventory, tables are the foundation. Your foundation must be strong, reliable and built to stand the test of time.

### *The Reliant Elite - Banquet, Round & Conference*

RELIANT means reliability. These are the best money can buy. Our customers tell us so. Our RELIANT line is engineered for rugged rental use and will stand the test of time. Durable and great looks too. Featuring truly smooth plywood surfaces and the detailed quality your customers expect.

#### Product Features:

- Void Free 3/4" Solid Plywood top
- UV Poly Coat on top (2 coats) and bottom (1 coat)
- Extra Thick Bull-nose Edge- BLACK
- Hardwood runners and cross members provide additional support
- 100% bolt thru Legs and Runners
- 1" Tubular 15 ga. Steel Wishbone Style Legs
- Powder Coat finish-Beige
- Secure high heat steel boss & mate locking mechanism
- Non marring plastic floor glides

#### Product Details:

- Available in Conference, Banquet, Rounds, Half Rounds, Squares
- Custom sizes available

#### Shipping Details:

- All tables ship palletized except very small orders which are cartoned.
- Shipping Class: 125 (round), 85 (banquet/conference)

Item no.	Description	Weight
201001	18" x 72" (6 foot) Conference Table (with gravity lock)	37.5 lbs
202001	18" x 96" (8 foot) Conference Table (with gravity lock)	45.5 lbs
216000	30" x 48" (4 foot) Banquet Table	42.5 lbs
203000	30" x 72" (6 foot) Banquet Table	49 lbs
204000	30" x 96" (8 foot) Banquet Table	58 lbs
204200	48" x 96" Banquet King Table	93 lbs
222000	30" Round Folding Table	23 lbs
221000	36" Round Folding Table	29.5 lbs
205000	48" Round Folding Table	44 lbs
205200	48" Square Folding Table	50.5 lbs
206000	54" Round Folding Table	53.5 lbs
207000	60" Round Folding Table	59 lbs
207200	60" Square Folding Table	75 lbs
208000	66" Round Folding Table	75 lbs
209000	72" Round Folding Table	89 lbs
209200	72" Square Folding Table	108.5 lbs

#### Parts & Accessories

201110	T-Mold (BLACK) - sold by the foot	n/a
203701	Banquet Table feet	.1 lbs
280070	Table Truck for 6' Banquet Tables - holds 12-15 Tables. Fits 30" w doorway	67.5 lbs
280090	Table Truck for 8' Banquet Tables - holds 12-15 Tables. Fits 30" w doorway	77 lbs
280160	Table Truck for 48"- 72" Rounds - holds 8 Tables. Fits 30" w doorway	81.5 lbs
290000	Standard Velcro plastic shirt clip for wood tables	.02 lbs

#### Call for parts not listed

Note: Due to moisture changes, weights of tables can change up to 5-7%



Table tops & Leg Assemblies sold separately (call for quotation)



Aluminum edge available on special order

Table tops & Leg Assemblies sold separately (call for quotation)

## *The Rental Elite*

The Rental Elite Table offers the features that are the quality standard! The popular Gravity Lock Leg and Extra Thick Bullnose molding along with hardwood runners and a smooth Blonde top will provide a table attractive not only to your bottom line but to your most upscale customer.

#### Product Features:

- 3/4" Void Free Solid Plywood top
- UV Poly Coat on top (2 coats) and bottom (1 coat)
- Extra Thick Bull-nose Edge- BROWN
- 100% bolt thru Legs and Runners
- 1" Tubular 15 ga. Steel Wishbone Style Legs
- Powder Coat finish-Beige
- Secure gravity lock Folding Mechanism for Secure Setups
- Non marring plastic floor glides
- Galvanized steel/aluminum edging available on special order

Item no.	Description	Weight
201001	18" x 72" (6') Conference Table	39.5 lbs
202001	18" x 96" (8') Conference Table	46 lbs
216001	30" x 48" (4') Banquet Table	35 lbs
203001	30" x 72" (6') Banquet Table	46 lbs
203400	72" x 15" (6') Banquet Bar Top (use with item #203001)	25 lbs
204001	30" x 96" (8') Banquet Table	59.5 lbs
204400	96" x 15" (8') Banquet Bar Top (use with item #204001)	32 lbs
204201	48" x 96" Banquet King Table	100 lbs
222001	30" Round Folding Table	20 lbs
222000	30" Round Folding Table (Reliant Elite style only)	14 lbs
221000	36" Round Folding Table (Reliant Elite style only)	27.5 lbs
205001	48" Round Folding Table	44 lbs
205100	48" Half Round Table	30 lbs
205201	48" Square Folding Table	50.5 lbs
206001	54" Round Folding Table	54 lbs
207001	60" Round Folding Table	57 lbs
207100	60" Half Round Table	39 lbs
207201	60" Square Folding Table	74 lbs
208001	66" Round Folding Table	75 lbs
209001	72" Round Folding Table	84 lbs
209201	72" Square Folding Table	97 lbs
218001	Small Serpentine Table (3' inner diameter x 8' outer diameter)	41 lbs
219001	Medium Serpentine Table (4' inner diameter x 9' outer diameter)	43 lbs
220001	Large Serpentine Table (5' inner diameter x 10' outer diameter)	46 lbs
218110	Small Serpentine Bar Top (use with Item #218001)	25 lbs
219110	Medium Serpentine Bar Top (use with Item #219001)	28 lbs
220110	Large Serpentine Bar Top (use with Item #220001)	31.5 lbs

#### Parts & Accessories

201111	T-Mold (BROWN) - sold by the foot	n/a
203701	Banquet Table feet	
280160	Table truck for 48", 54", 60", 66" & 72" rounds - holds 8 tables	82 lbs
280070	Table Truck for 6' Banquet Tables - holds 12-15. Fits 30" w doorway	67.5 lbs
280090	Table Truck for 8' Banquet Tables - holds 12-15. Fits 30" w doorway	77 lbs
281002	Rack Stack N' Go series - banquet folding tables	207 lbs
281003	Rack Stack N' Go series - 48", 54" & 60" round tables	212 lbs
281004	Rack Stack N' Go series - 66" & 72" round tables	218 lbs
290000	Standard Velcro plastic skirt clip for wood tables	

#### Call for parts not listed

Note: Due to moisture changes, weights of tables can change up to 5-7%





### The Laminate Elite

Popular in restaurant and hospitality industries, the Laminate Elite is available in banquet table, pedestal table and round table configurations

**Product Features:**

- Folding Tables: Metal frame, melamine table top with WALNUT laminate w/ brown T-Mold & Boss & Mate leg assembly
- Pedestal (cocktail) table tops: 3/4" plywood with laminate in Walnut Brown or Grey
- Laminate is 0.012" affixed with super adhesive & cured
- Non-marring floor glides on folding tables

Item no.	Description	Weight
201112	18" x 72" (6 foot) Conference Table"	44 lbs
202112	18" x 96" (8 foot) Conference Table"	55 lbs
203112	30" x 72" (6 foot) Banquet Table"	64 lbs
204112	30" x 96 (8 foot) Banquet Table"	79 lbs
207112	60" Round Table"	80 lbs
217112	30" x 60" (5 foot) Banquet Table"	56 lbs
217113	18" x 60" (5 foot) Conference Table"	41 lbs
200521	24" top w/Walnut Brown laminate	10 lbs/top
200523	24" top w/Black laminate	10 lbs
200620	30" top w/Black laminate	14 lbs
200621	30" top w/Walnut Brown laminate	14 lbs
200720	36" top w/Black laminate	16 lbs
200721	36" top w/Walnut Brown laminate	16 lbs

Grey laminate top & other custom colors/patterns available by special order.

### The Rental Elite "Light"

Take quality, rugged RENTAL ELITE tables – adapt them for churches, restaurants & other applications that require a "lighter" product.

**Product Features:**

- HDPE (resin) blow mold top
- 1" - 1.28" tubular steel legs with a solid steel bridge welded from one side of the wishbone leg to the other for added strength
- Steel support frame with an extra weld & screwed mid section steel support to prevent bowing of the table top with weight concentration in the middle of the table
- Leg assembly has powder coat beige finish
- Secure gravity lock folding mechanism for secure setups
- Non marring floor glides

Item no.	Description	Weight
217601	5' Resin Folding Banquet Table (30" x 60")	26.4 lbs
203601	6' Resin Folding Banquet Table (30" x 72")	31 lbs
204601	8' Resin Folding Banquet Table (30" x 96")	45 lbs
205601	48" Round Resin Folding Table (48" RD)	31 lbs
207601	60" Round Resin Folding Table (60"RD)	54 lbs
209601	72" Round Resin Folding table (72"RD)	74 lbs
201901	5' Resin Folding Conference Table (18" x 60")	23 lbs
201601	6' Resin Folding Conference Table (18" x 72")	26 lbs
202601	8' Resin Folding Conference Table (18" x 96")	32 lbs
135032	Resin Blow Mold Folding Chair	10 lbs
131210	NEW Heavy Duty Folding Hanging Chair Cart	100 lbs

See Page 15 for more accessories



### The Caterer Elite

**Product Features:**

- Void free 1/4" plywood top with poly finish
- Solid 3/4" plywood cross member supports
- Solid hardwood box frame with metal stacking corner protectors
- 15 ga. Expo style legs with Gravity lock folding mechanism
- Non Marring Floor Glides

Item no.	Description	Weight
216501	30" x 48" (4') CATERER Style table	32 lbs
203501	30" x 72" (6') CATERER Style table	41 lbs
204501	30" x 96" (8') CATERER Style table	49 lbs

### The Expo Elite

**Product Features:**

- Time tested lightweight design
- Void free 1/4" plywood top with polyurethane finish
- Solid 3/4" plywood cross member supports
- Chrome cap and adjustable legs
- Hardwood frame and adjustable legs makes this our most versatile option

Item no.	Description	Weight
250002	24" x 48" EXPO ELITE convention style table	32 lbs
250000	24" x 72" EXPO ELITE convention style table	37 lbs
250001	24" x 96" EXPO ELITE convention style table	44 lbs
250011	18" x 96" (8' Conference) EXPO ELITE convention style table	40 lbs



### The Card Elite

Item no.	Description	Weight
223000	34" x 34" Card Style Table	27.5 lbs
224000	36" x 36" Card Style Table	30 lbs
225000	32" x 32" Card Style Table	26.5 lbs

Table Accessories		
Item no.	Description	Weight
280070	Table Truck for 6' Banquet Tables (holds 12-15)	67.5 lbs
280090	Table Truck for 8' Banquet Tables (holds 12-15)	77 lbs
280160	Table Truck for 48" to 72" Round Tables (holds 8)	81.5 lbs
290000	Standard Velcro plastic skirt clip for wood tables	.02 lbs
292000	Standard Velcro plastic skirt clip for resin tables	.02 lbs
250100	Top ONLY for 6' EXPO Elite table 24" x 72" (wood)	27 lbs
250101	Top ONLY for 8' EXPO Elite table 24" x 96" (wood)	33.5 lbs
250102	Top ONLY for 4' EXPO Elite table 24" x 48" (wood)	20.5 lbs
250200	Adjustable leg for EXPO Elite tables	7 lbs
250202	Staple Strip for EXPO Elite tables	.1 lbs
250300	Metal Corners for EXPO Elite tables	.1 lbs
250400	Chrome Caps/feet for EXPO Elite tables	.1 lbs

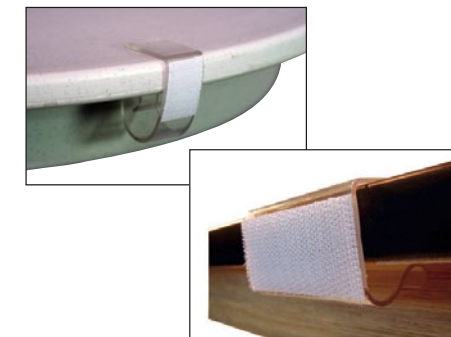


Table tops & Leg Assemblies sold separately (call for quotation)



## The Forest Collection

For some years now customers have requested more “nature friendly” furniture as the backdrop of their weddings and special events. Natural wood grain, fruitwood stains and rustic looking furniture have exploded in popularity.

Our matching Forest chair, stool and tables, that features a weathered wood raised finish, takes it to an all new level of sophistication and allows for continuation of the back nature theme throughout your event.

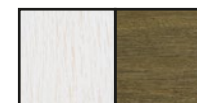
Embracing the old world theme, the Forest Collection harkens back to days of yore. With an antique character, these chairs, stools, benches and tables combine well with each other, or even pair them with a fruitwood or natural wood chair.

### Product Features:

- Weathered hardwood frame utilizing a wire stripping process
- Cross-back design with inlaid seating pattern
- Mechanical joints/bolts for greater stability
- Cushions are single piping, zipper pouch & 1.25” thickness

### Product Details:

- Ships individually assembled
- Dimensions: 35.5” x 18.75” x 17.75” (Top of chair to floor x Top of seat to floor x Width of seat) (CHAIR), 45.25” X 30” X 17.25” (BARSTOOL)



Item no.	Description	Weight
191100	Forest series cross back chair	10 lbs
191101	Forest series cross back barstool	12.5 lbs
191104	Forest series cross back chair in white wash	10 lbs
172009	Forest series Beverly antique vintage chair	8 lbs
203206	Forest series bench (72” x 14”)	25.5 lbs
204206	Forest series bench (96” x 14”)	30.5 lbs
205206	Forest series bench (48” x 14”)	19.5 lbs
204205	Forest series farm table (48” x 96”)	119 lbs
204305	8’ Forest series farm table (40” x 96”)	130 lbs
204306	6’ Forest series farm table (40” x 72”)	101 lbs
208005	Forest series 66” round table	137 lbs
213400	Forest series 30” round bistro table	22 lbs
211400	Forest series 36” round bistro table	27 lbs
212400	Forest series 30” round sweetheart table	20 lbs
210400	Forest series 36” round sweetheart table	26.5 lbs
210401	Forest series 36” square sweetheart table	30 lbs
212401	Forest series 30” square sweetheart table	24 lbs
Custom	Custom colors on special request	

### Parts & Accessories

191201	Forest chair saver protective cover	
121700	Forest chair feet (set of 4)	
121501	White Forest cushion with 12” ties	
121502	Black Forest cushion with 12” ties	
121509	Sand Forest cushion with 12” ties	
204215	48” x 96” Forest table protective cover	
204315	40” x 96” Forest table protective cover	
204316	40” x 72” Forest table protective cover	
208015	Round Forest table protective cover	
213415	30” Round Forest bistro/sweetheart table protective cover	
211415	36” Round Forest bistro/sweetheart table protective cover	





### Folding Chair Carts

These handy chair carts will help you stack, store & transport your folding chairs quickly and easily.

**Product Features:**

- 4" (standard) casters and 5" (heavy duty) casters with 2 fixed wheels and 2 swivel wheels
- Durable steel frame
- Removable tubular steel handle for convenient storage

**Product & Shipping Details:**

- 1 per carton
- Weight - 44 lbs ea. (Standard) 48 lbs ea. (Heavy Duty) 46 lbs ea. (Fanback) 186 – 298 lbs ea. (RSNG) 117 lbs ea. (Hanging chair cart)
- Cart Dimension - 41" (l) x 18.75" (w) x 43.5" (h) (Standard) 43.75" (l) x 19" (w) x 45.25" (h) (heavy duty) 41" (l) x 18.75" (w) x 46.5" (h) (fanback)
- Carton is - 41.5" x 19.5" x 5.5" (champ) 45"x19.5"x5.5" (fanback cart)
- Carton weight - 45 lbs (champ cart) 46 lb (fanback cart)
- Shipping Class: 85 (Standard/Heavy duty/Fanback cart); 125-250 (RSNG); 175 (Hanging chair cart)
- Palletized - 30 ctns 48" x 39" x 87" (champ)
- Palletized - 30 ctns 48" x 39" x 90" (fanback)
- Ships with wheels detached

Item no.	Description
131901	Standard Chair Cart (4" wheels) for Polyfold / Resin Chairs
131902	Heavy Duty Chair Cart (5" wheels, reinforced frame & handle) for Polyfold / Resin Chairs
131211	Standard Chair Cart (4" wheels) for Fanback Chairs
281000	Rack Stack N' Go series Chair Cart
131210	NEW Heavy Duty Folding Chair Cart

### Folding Table & Pedestal Carts

Rock solid table carts for your banquet, rounds & pedestal table inventory. Heavy duty caster assemblies for long lasting, dependable transport."

**Product Features:**

- 5" Heavy Duty casters with 2 fixed and 2 swivel wheels (customer can customize at no extra charge)
- Durable steel frame
- Removable tubular steel handle for convenient storage

**Product & Shipping Details:**

- Weight: 60 lbs (6' banquets); 80 lbs (8' banquets); 82 lbs (rounds)
- Cart dimensions: 76.5" x 24" x 73.3" (6' banquets); 100.5" x 24" x 97.5" (8' banquets); 67" x 36" (rounds)
- Shipping Class: 125
- Ships with casters detached

Item no.	Description
280070	Table Cart for 6' banquet tables (holds 12-15)
280090	Table Cart for 8' banquet tables (holds 12-15)
280160	Table Cart for 48" to 72" round tables (holds 8)
281001	Rack stack N' Go series - pedestal (wood)
281005	Rack Stack N' Go series - pedestal (blowmold)
281002	Rack Stack N' Go series - banquet folding tables cart
281003	Rack Stack N' Go series - 48", 54" & 60" round tables cart
281004	Rack Stack N' Go series - 66" & 72" round tables cart
280000	Standard Pedestal Table Tower Cart for 30" table tops (holds 10 complete sets)
280001	Standard Pedestal Table Tower Cart for 36" table tops (holds 10 complete sets)
280002	Standard Pedestal Table Tower Cart for 24" table tops (holds 10 complete sets)



### Stanchion Carts

Storing stanchions can be difficult especially when floor & shelf space is an issue in your warehouse. Solve all your problems with the MIDAS Stanchion Cart. Tough, strong and versatile, our Cart holds up to 41 stanchions and features 5" heavy duty casters.

**Product Features**

- 5" Heavy Duty casters with 2 fixed and 2 swivel wheels
- Durable steel frame
- Holds up to 41 stanchions
- Small foot print to save on warehouse space

Item no.	Description
280005	Stanchion Cart

### Rack Stack N' Go

Our unique, integrated storage & transportation system simplifies warehouse storage and delivery to major events. Our units accommodate wood, resin & polyfold chairs, folding tables, pedestal (cocktail) tables and inter-stack for ease of storage in the warehouse and quick delivery to events. Save time, save warehouse space, save on warehouse racking and improve accountability of your equipment with Rack Stack N' Go!

**Product Features on all RSN'Gs**

- 6" x 2" Heavy Duty casters with 2 fixed and 2 swivel wheels for easy maneuvering (customer can customize at no extra charge)
- Removable posts to save on freight costs
- Durable "U" channel steel frame

**On the Pedestal Table Model (Wood 281001, Blowmold 281005)**

- Designed to hold 20 complete sets of pedestal (cocktail) tables including 20 table height & 20 bar height posts
- Two detachable columns holds 20 bases
- Table holder attachment holds 20 - 3/4" tops; 24", 30" or 36" diameter

**On the Round Folding Table Models (281003, 281004)**

- Designed to hold up to 11 tables
- Accommodates 48" to 60" Rounds with 63" high stacking posts
- Accommodates 66" to 72" Rounds with 75" high stacking posts
- Crossbars on all 4 sides to prevent tables moving while in transit
- Equipped with Heavy Duty Velcro Safety Strap for added security

**On the Banquet Folding Table Model (281002)**

- Designed to hold up to 20 - 5', 6', or 8' folding tables
- Equipped with 2 Heavy Duty Velcro Safety Straps for added security

**On the Folding Chair Model (281000)**

- Designed to carry 120 Polyfold OR 60 Wood folding OR 60 Resin Folding chairs
- Chair guides built on frame bottom ensures first chair is secure in turn providing stabilization for the rest of the stack
- Equipped with 3 Heavy Duty Velcro Safety Straps for added security

Note: Blowmold Pedestal Top RSN'G Option available (281005)

**Product Details – Weight & Dimensions:**

**Banquet Folding Table Model (281002):**

- Frame - 135 lbs - 72" x 42" x 4.5"
- Posts(4) - 10lbs ea - 63" x 1.5" x 1.5"
- Set of Wheels - 32 lbs - 6" x 2" Wheels
- TOTAL WEIGHT: 207 lbs



Note: Contact us for non-standard sizes. Check if RSN'Gs will work for you.

Continued on: Page 20



**Product Details – Weight & Dimensions – Continued**

**Pedestal Table Model (281001)**

- Frame (1) - 135 lbs - 72" x 42" x 4.5"
- Set of 4 Wheels - 32 lbs - 6" x 2" Wheels
- Stacking Post (4)(9.5 ea) - 38 lbs - 63" x 1.5" x 1.5"
- Base Holder(2)(4.25 ea) - 8.5 lbs - 32" x 4.25" x 3.25"
- Post Holder (4)(5.65 ea) - 22.6 lbs - 16" x 16" x 7.5"
- Top Holder Attachment (1) - 42 lbs - 41" x 27" x 9.5"
- Post Protectors (40)(0.35) - 14 lbs - 20.5" x 2" Diameter Cardboard Tube
- Safety Stops(2)(3 ea) - 6 lbs - 38" x 9.5" x 2"
- TOTAL WEIGHT: 298 lbs

**Round Folding Table Models (281003, 281004):**

- Frame - 135 lbs - 72" x 42" x 4.5"
- 48" - 60" Rd Cart - 63" Post (4) - 10 lbs each - 63" x 1.5" x 1.5"
- 72" Rd Cart - 78" Post(4) - 13 lbs each - 78" x 1.5" x 1.5"
- Long siderail (2) - 1.5 lbs each - 56.5" x .5" (tube steel)
- Short siderail (2) - 1 lb each - 34.5" x .5" (tube steel)
- Set of Wheels - 32 lbs - 6" x 2" Wheels
- TOTAL WEIGHT: 212 lbs

**Folding Chair Model (281000):**

- Frame(1) 114 lbs - 60" x 38" x 4.5"
- Posts(4) - 10 lbs ea - 63" x 1.5" x 1.5"
- Set of Wheels - 32 lbs - 6" x 2" Wheels
- TOTAL WEIGHT: 186 lbs

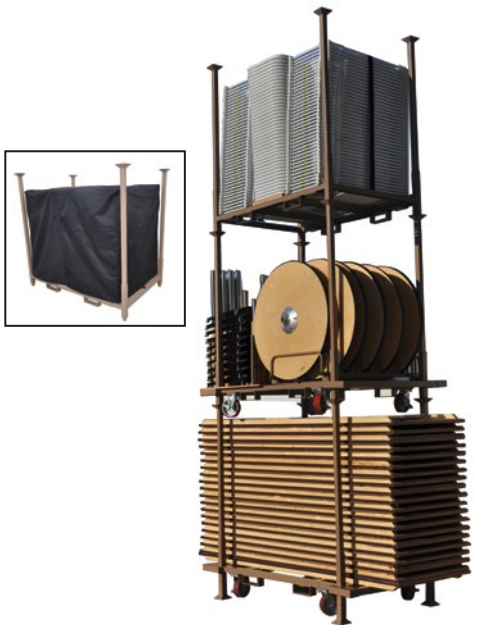
**Shipping Class: 125**

- Palletized
- Ships with casters & posts detached, where applicable, for reduced shipping cost.

Item no.	Description	Weight
281000	RACK STACK N' GO - CHAIR CART MODEL complete	186 lbs
281001	RACK STACK N' GO - WOOD PEDESTAL CART MODEL complete	298 lbs
281002	RACK STACK N' GO - BANQUET TABLE CART MODEL complete	207 lbs
281003	RACK STACK N' GO - 48"-60" ROUND TABLE CART MODEL complete	212 lbs
281004	RACK STACK N' GO - 66"-72" ROUND TABLE CART MODEL complete	218 lbs
281005	RACK STACK N' GO - BLOWMOLD PEDESTAL CART MODEL complete	258 lbs

**Parts & Accessories**

280301	RACK STACK N' GO - FRAME only Chair Carts	114 lbs
281302	RACK STACK N' GO - FRAME only ALL Table Carts	135 lbs
161226	RACK STACK N' GO - HEAVY DUTY 6" CASTERS for all carts	8 lbs
280327	RACK STACK N' GO - 50.5" (standard) POST for all Carts (ie. 120 polyfolds)	9 lbs
280311	RACK STACK N' GO - 63" (extended) POST for all Carts (ie. 150 polyfolds)	10 lbs
280316	RACK STACK N' GO - 78" POST for 72" Round tables	13 lbs
280328	RACK STACK N' GO - 83" POST for 72" Square tables	14 lbs
280312	RACK STACK N' GO - Long side RAIL for Round Table Carts	1.5 lbs
280318	RACK STACK N' GO - Short side RAIL for Round Table Carts	1 lb
280313	RACK STACK N' GO - POST HOLDER only for Pedestal Table Carts	23 lbs
280314	RACK STACK N' GO - BASE HOLDER only for Pedestal Table Carts	9 lbs
280315	RACK STACK N' GO - TABLETOP HOLDER only for Wood Pedestal Carts	42 lbs
280319	RACK STACK N' GO - TABLETOP HOLDER only for Blowmold Pedestal Table Carts	42 lbs
280320	RACK STACK N' GO - POST PROTECTORS only for all Pedestal Carts	.5 lbs
280324	RACK STACK N' GO - FLOOR BASES only for all Carts	10 lbs
280325	RACK STACK N' GO - SAFETY STRAPS only for all Carts	.5 lbs
280326	Rack Stack N' Go cart cover	



*Patio Umbrellas*

Simply the best in wood market umbrellas for temperate climates and hardy aluminum umbrellas for all climate conditions.

**Product Features:**

- Wood market umbrellas are 100% high quality manufactured hardwood
- Aluminum umbrellas are lightweight but sturdy, anodized with S/S matte finish
- 100% polyester canvas (Natural or Hunter Green color options)
- Resin Pads, pulley & crown resist cracking
- Tight steel locking construction

**Product Details:**

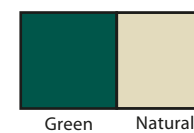
- Sold individually
- Weight (wood umbrellas) - 22 lb (9.5') 30 lb (11.5')
- Weight (aluminum umbrellas) - 14 lb (9.5') 19 lb (11.5')

**Shipping Details:**

- Carton (2 pc wood 9.5' umbrella): 55" x 7" x 8"
- Carton (1 pc aluminum 9.5' umbrella): 98" x 7" x 8"
- Carton (1 pc aluminum 11.5' umbrella): 106" x 7" x 8"
- Carton (44 lb base): 20" x 4" x 20"
- Umbrellas Class - 125; Base - Class - 70
- Palletized 60 ctns - 55" x 36" x 89" (9')

Item no.	Description
300003	9 1/2' Wood Market Umbrella with Natural canvas top
300011	9 1/2' Wood Market Umbrella with Hunter Green canvas top
300103	9 1/2' Wood Market Umbrella (Top Only - Natural)
300111	9 1/2' Wood Market Umbrella (Top Only - Hunter Green)
301003	11' Wood Market Umbrella with Natural canvas top
301011	11' Wood Market Umbrella with Hunter Green canvas top
301103	11' Wood Market Umbrella (Top Only - Natural)
301111	11' Wood Market Umbrella (Top Only - Hunter Green)
303003	9 1/2' Aluminum Umbrella with Natural canvas top
303011	9 1/2' Aluminum Umbrella with Hunter Green canvas top
303203	9 1/2' Aluminum Umbrella (Top Only - Natural)
303213	9 1/2' Aluminum Umbrella (Top Only - Hunter Green)
303103	11' Aluminum Umbrella with Natural canvas top
303111	11' Aluminum Umbrella with Hunter Green canvas top
303133	11' Aluminum Umbrella (Top Only - Natural)
303123	11' Aluminum Umbrella (Top Only - Hunter Green)
302003	Concrete umbrella base (w/handles)
302004	Decorative Cast Iron Base

**Market Umbrella Color Choices**





### The Midas Plate Crate

The better fit. Our crate collection accommodates base (charger) plates, dinner plates and salad/B&B and with our dividers, can be used for bottles and other event transportables.

#### Product Features & Details:

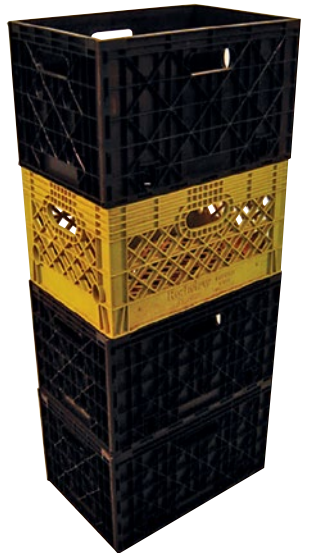
- 18" x 12" x 11"H (large version - dinner plates) capacity approx 45 - 10 5/8" plates
- 11" x 11" x 11"H (small version - dinner plates) capacity approx 30 - 10 5/8" plates
- 13.5" x 13.5" x 13.5"H (charger/base plates) capacity approx 26 - 12" plates
- Dividers for dinner plates (set of 6 for 1 crate) that can be configured as desired to hold other products
- Dividers for charger plates (set of 6 for 1 crate) that can be configured as desired to hold other products

#### Shipping Details:

- Dinner Plate (large version) Crates - less than six, ships in individual carton (20.25" x 12.75" x 4.25"); more than six, ships in master cartons of quantity 6 per master ctn (36" x 20" x 14")
- Dinner Plate (small version) Crates - less than six, ships in individual carton (13.75" x 12.5" x 4"); more than six, ships in master cartons of quantity 6 per master ctn (23" x 15" x 13")
- Charger Plate Crates - less than six, ships in individual carton (15" x 14.5" x 4"); more than six, ships in master cartons of quantity 6 per master ctn (25" x 16" x 16")
- Dividers for Dinner Plate Crates (set of 6 for 1 crate) - less than twelve, ships in individual carton (11" x 12.5" x 2.25"); order 12 or more sets will ship in master cartons of quantity 12 sets per master ctn (25" x 14" x 12")
- Dividers for Charger Plate Crates (set of 6 for 1 crate) - less than twelve, ships in individual carton (11.25" x 12.75" x 2.25"); order 12 or more sets will ship in master cartons of quantity 12 sets per master ctn (25" x 14" x 14")

Item no.	Description	Weight	Ctn. Dimension
802100	Charger/Base Plate Crate	6.5 lbs	15" x 14.5" x 4"
802200	Dinner plate crate Large version	6.5 lbs	20.25" x 12.75" x 4.25
802300	Dinner plate crate Small version	5 lbs	13.75" x 12.5" x 4"
802120	Dividers for Charger/Base Plate Crate (set of 6)	4.5 lbs	14" x 14" x 2.25"
803120	Dividers for Dinner Plate Crates (set of 6)	3 lbs	11.25" x 12.75" x 2.25"

NOTE: Custom colors & screen printing available



Note: Custom Chair Colors and Materials available on special order.

### TABLE LINENS & NAPKINS

#### The Renaissance Collection

The Renaissance Collection linens have colors available to accommodate any client. The durability and stain resistance far surpasses that of regular restaurant linens.

#### Product Features:

- 100% polyester linens resist shrinkage
- Stain resistant
- Durable rental industry quality

For ordering by Item numbers - size dictates first 4 digits, color final 2 digits ie. 7001 is 45" x 45" and 01 is white, therefore order 700101 is 1 45" x 45" white table linen.

Item no.	Square	Item no.	Round
701001	90" x 132"	701101	90" x 156"
700201	54" x 54"	701301	72" Round
700301	60" x 60"	701501	84" Round
700401	72" x 72"	701701	90" Round
706001	84" x 84"	702001	96" Round
700501	60" x 90"	702301	102" Round
700601	60" x 108"	702501	108" Round
700701	60" x 120"	702601	120" Round
700801	72" x 120"	702801	132" Round
700901	72" x 144"		
701101	90" x 156"		

Item no.	Description
703801	20" x 20" Napkins/ dozen
704001	13.5' Skirt (Pleated/Box) Velcro clips included w/ every purchase
132001	CHAIR COVER for CHAMP & CLASSIC CHAIRS (price includes 6" x 105" sash)
290000	Velcro plastic skirt clip for wood tables (for 3/4" to 1" thick tables)
292000	Velcro plastic skirt clip for plastic tables (for 3/4" to 1" thick tables)





## STANCHIONS

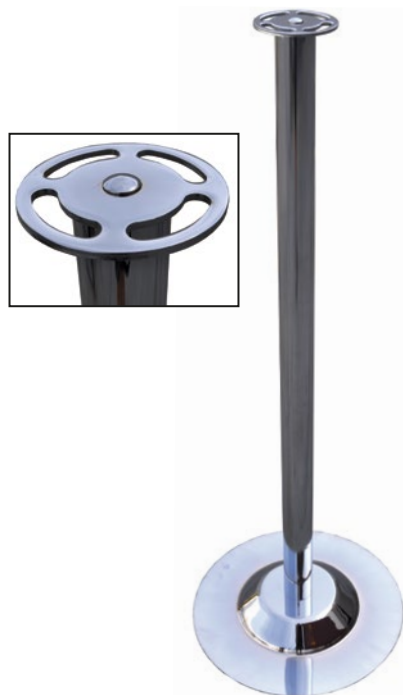
Available in Screw On Top Ring or retractable belt (Tensa Head) options.

### Product Features:

- Flat, 14" base plate built to stay level and reduce tipping
- Uses multi functional base plate and pole for broader usage & savings
- Multi directional S-Hook slotting for ease of use
- High quality Chrome finish
- Retractable Belt option extends 6'
- Available parts & accessories include Tensa Head, Stanchion Top Ring, Plastic S-hooks & Chain, Red Velvet rope

### Product Details:

- Base & Pole extend 42" H, Weight: 21 lbs
- Retractable Belt - available in BLACK or RED
- Tensa Head Polished Chrome finish



Item no.	Description	Weight
161705	Heavy Duty Stanchion Complete: consists of BLACK Stanchion Retractable Belt Head (Tensa) + Base + pole; All Steel with polished chrome finish (hooks & chain sold separately) 41 3/4" x 14 1/8"	16.6 lbs
161709	Heavy Duty Stanchion Complete: consists of RED Stanchion Retractable Belt Head (Tensa) + Base + pole; All Steel with polished chrome finish (hooks & chain sold separately) 41 3/4" x 14 1/8"	16.6 lbs
161905	Heavy Duty Stanchion Complete: consists of Stanchion Top Ring + Base + pole; All Steel with polished chrome finish (hooks & chain sold separately) 40 1/4" x 14 1/8"	17.6 lbs

### Parts & Accessories

161715	BLACK Stanchion Retractable Belt Head (Tensa) 5 1/2" x 3 3/8"	1.3 lbs
161719	RED Stanchion Retractable Belt Head (Tensa) 5 1/2" x 3 3/8"	1.3 lbs
161725	Stanchion Top Ring (screw on) 4 3/4" diameter	2.3 lbs
161735	Stanchion Hooks (plastic S hooks) in Black	.1 lbs
161745	Stanchion Chain (plastic - black) sold by the foot	.1 lbs
161755	Stanchion RED Velvet Rope (6')	3.2 lbs
161756	Stanchion RED Velvet Rope (8')	4 lbs
161757	Stanchion RED Twisted Rope (6')	4 lbs
161758	Stanchion BLACK Twisted Rope (6')	4 lbs
161759	Stanchion BLUE Twisted Rope (6')	4 lbs
161998	14" diameter Multi Use Base - All steel, polished chrome 14 1/8" diameter 1 3/8" H	11.1 lbs
161999	37 1/2" Multi Use Pole, all steel and polished chrome 2" diameter 36 3/8" H	4.2 lbs
280005	Stanchion Cart	100 lbs



## SIGN HOLDERS

Use in conjunction with multi functional base & pole. In 2 popular sizes.

### Product Features:

- Welded durable frame
- Assembles quickly by screwing into multi functional pole, top ring is attached to bottom of frame
- Small size frame holder (8 1/2" x 11") and large size frame holder (22" x 28") available
- Allows for quick installation & removal of signs (customer supplied)
- All steel with polished chrome finish
- Stanchion top ring attached to bottom of frame for multi use to attach stanchion chain or stanchion red velvet rope."

### Product Details:

- Small size extends 49", Large size extends 66"
- Small size weight including base & pole: 17 lbs
- Large size weight including base & pole: 21 lbs



Item no.	Description	Weight
161727	8.5" x 11" Sign Holder Frame & Base Complete: Consists of Frame + Multi Use Base + Multi Use Pole 48 5/8" x 14 1/8"	19.6 lbs
161707	22" x 28" Sign Holder Frame & Base Complete: Consists of Frame + Stanchion Top Ring + Multi Use Base + Multi Use Pole 69 1/8" x 22 3/8" x 14 1/8"	21.9 lbs
Parts & Accessories		
161787	8.5" x 11" Frame ONLY Sign Holder 8 5/8" x 12 1/2" x 3 1/2"	2 lbs
161717	22" x 28" Frame Only Sign Holder 22 1/8" x 29 3/8" x 3 1/2"	4.3 lbs
161998	14" diameter Multi Use Base - All steel, polished chrome - 14 1/8" diameter 1 3/8" H	11.1 lbs
161999	37 1/2" Multi Use Pole, all steel and polished chrome - 2" Diameter 36 3/8" H	4.2 lbs

## Coat Racks & Coat Trees

Use coat tree extension with multi functional base & pole for additional savings.

### Product Features:

- Polished Chrome finish, All steel construction
- Easy assembly (3 pieces - Coat Tree, 4 pieces - Coat Rack)
- Uses multi functional base & pole

### Product Details:

- Coat Tree: Total Height (incl. coat tree extension & pole) - 70"
- Coat Rack: Total Height - 69 5/8" H
- Coat Rack: Dimensions: 62 3/4" x 23 1/4" x 69 5/8" H

Item no.	Description	Weight
161702	70" high Clothes Tree - consists of 3 pieces: 14" diameter Base, Pole & Clothes Tree extension that disassembles for easy storage, All Steel, All polished chrome	19.5 lbs
161701	EXPO Clothing Rack	32 lbs
Parts & Accessories		
161712	32" Clothes Tree Extension, polished chrome, all steel, 8 hooks 6 1/4" wide x 34" H	4.2 lbs
161998	14" diameter Multi Use Base - All steel, polished chrome 14 1/8" diameter x 1 3/8" H	11.1 lbs
161999	37 1/2" Multi Use Pole, all steel and polished chrome - 2" diameter x 36 3/8" H	4.2 lbs



## At Midas Event Supply, Custom Manufacturing is an important component of our service matrix to the Party Rental, Catering and Club marketplace.

We manufacture and distribute a broad range of party rental equipment for the North American market. Our Party Rental Trade catalog contains hundreds of in stock items such as chairs, tables, umbrellas, crates, and linens manufactured in a variety of materials; resin, wood, steel, aluminum, canvas and such.

However, when a slight modification to an existing product is required OR a new concept on paper needs to be fast tracked to prototype and subsequently to production, call MIDAS for a consultation.

### Modifications to Standard Products

Alternate finishes and/or materials are common requests that normally require minor alterations at our factories. Typically, customers require matching to existing stock where the former manufacturer is out of business or has discontinued making that item. Perhaps, in light of competition, the customer cannot access the product at a price that makes it economically feasible. MIDAS has a history of meeting these special needs quickly & efficiently whether it is a specially formulated paint for a chair, a custom size for a table, a new color for a seat pad, a special color for our storage crates ...



*“We were able to combine an order for a custom modified seat pad with MIDAS’s stock chairs and save thousands on direct container delivery to our facility...”*

A. Pennington, Classic Party Rentals

*“Custom size plywood tables are a rule, not an exception, in our business. We use MIDAS often for custom sizes normally unavailable elsewhere.”*

S. Woodward, The Woodward Group



### New Products From Concept or Prototype to Production

New applications can arise from remanufacturing popular products with inherent design deficiencies. An example was the MIDAS Plate Crate – customers wanted a strong plastic crate that would safely accommodate fine china but didn’t want to pay the significant freight costs associated with shipping. MIDAS custom manufactured a crate that would ship KD and could be assembled with no tools required. Freight costs from factory to warehouse and subsequent shipping to customers were reduced over 50%.

*“Remanufacturing the basic milk crate (KD) was an excellent design choice, freight savings were really attractive and I was able to customize them for our company...”*

S. Marshall, Arizona Tents & Events



**New applications can also arise from** brilliant customer ideas on design and functional usage. On the strength of their experience in providing bar service to the party and event rental industry, Ultimate Bars developed the perfect portable bar application – one that would combine bar service functionality, brilliant design and ease of portability. To bring it to market at an affordable price, they turned to MIDAS’s custom manufacturing services.

*“This was a very detailed and, in some ways, difficult undertaking. MIDAS had to manufacture strictly from drawings without the benefit of our direct oversight. Considering the time limitations involved and approvals only by digital means, it was a heck of an effort by MIDAS and their craftsmen”*

T. Crivaro, Ultimate Bars



### Getting Started

MIDAS can work from sample or drawing and, depending on the application, everything is done completely in house at our two factories. Both factories feature a wide array of specialized equipment including injection molding machines, powder-coating facilities, steel fabrication and CAD technologies.

- Reach out to a MIDAS representative by phone, email or at a trade show. Describe your project and what is available – sample, CAD/engineered drawings, conceptual sketches or just an idea.
- MIDAS will draft a proposal with preliminary pricing and timelines required for your project.
- Custom projects require a 50% deposit – work begins on receipt of your Purchase Order + deposit. Payment acceptable via major credit card or company check.



*“The MIDAS Plate Crate (KD) is a great design idea but we needed a custom color and artwork to match our existing products. MIDAS was up to the challenge and worked with us to meet our guidelines.”*

John Bibbo, Jr. Event Source



## Testing Protocols/Certifications/Insurance

**Early in our firm's history we recognized the importance of testing our equipment to meet or exceed industry standards.**

In 2005 we conducted laboratory testing of our resin folding chair and other competitive models. The chairs were tested using American National Standard (ANSI-BIFMA X5.4) testing protocols. While the testing was quite expensive, we decided to set up similar testing apparatus in our factories so that production runs could be tested on a random basis to ensure conformity to American safety standards. We continue this practice today.

**Various state and federal government organizations also require testing of equipment to comply with safety rules and regulations. Among the certifications Midas is required to maintain are:**

- **California Fire Code 119 – flammable fabrics/cushions**
- **License from Bureau of Electronic and Appliance Repair, Home Furnishings and Thermal Insulation**
- **CPSIA (Consumer Product Safety Improvement Act) – paint toxicity testing**

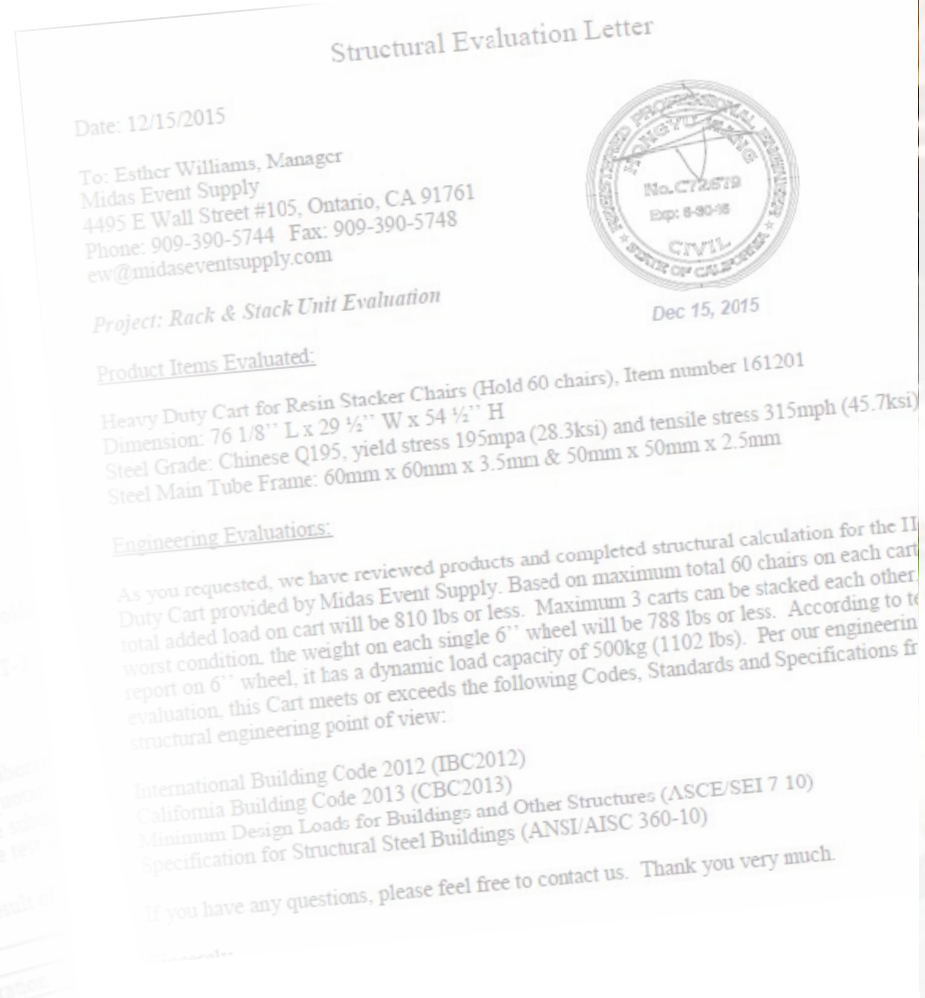
Occasionally customers will require U.S. engineer stamped drawings approving construction methods and materials. For example, Midas utilizes a U.S. civil engineering firm to review and approve drawings for its material handling carts. The engineer reviewed such items as type of steel utilized, type and number of welds, quality of fasteners etc. CAD drawings were reviewed followed by physical examination of the product in question. In this example the engineer cited International and California Building Codes, ASCE, ANSI as standards for his certification.

### Insurance

**Midas Event Supply's Certificate of Liability Insurance is available upon request.**

We maintain excellent standards of coverage through a Commercial General Liability policy augmented by additional umbrella coverage through a major American carrier. That same carrier provides coverage for Worker's Compensation and Employer Liability.

When you purchase rental and event equipment, take the extra step to ensure your vendor has made the investments necessary to test and certify to U.S. standards and that they carry adequate insurance coverage in case of mishap.



## The Midas Story

*The genesis of Midas Event Supply was rooted in a very simple and straightforward proposition.*

For many years the Party Rental industry faced a stark purchasing choice: buy U.S. made quality equipment at prices that made it difficult to turn a profit OR take a chance with imported equipment that promised the right price but dubious quality. After numerous years in the business MIDAS principals recognized the advantages of well priced quality imports for party rental professionals and set out to deliver it. Frankly it required a new approach: instead of buying existing imports from faceless factories overseas and keeping fingers crossed that production would not be materially different from samples, MIDAS went into partnership with factories that promised a commitment to U.S. standards of quality. MIDAS has worked onsite to upgrade equipment, production processes and quality control in those factories. It took some time but the effort was rewarded with competitively priced, quality equipment that is tested daily to various American production standards. As a result, from 2003 to 2008, Midas sales increased an average of 20-25% per year.

### Our Update...

As we recounted in the original Midas Story 16 years ago, the genesis of the company was rooted in a very simple and straightforward proposition. Find innovative means to produce cost effective, quality products that will help our customer's build their businesses. We were able to accomplish that by controlling production at the source instead of importing from faceless factories and hoping the quality would meet our standards. We continue to adapt to customer and market requirements, shifting some of our buying to US based companies and increasing our assembly operations in the US. Our international operations have Midas staff closely integrated with our suppliers and, in fact, one factory is 100% dedicated to producing Midas products. That level of integration underscores our commitment to ensuring all production is to US standard. Midas has also expanded it's operations in the EXPO field, manufacturing material handling carts and other EXPO products for the largest tradeshow contractors in the US.

*Thank you to our customers who have made this possible.*

## Need Help With Product Assembly?

Check out the many videos at: [www.MidasEventSupply.com](http://www.MidasEventSupply.com)

### Instructions For:

- Bag Holders
- Banquet Table Trucks for 6' & 8' Banquet Tables
- Bar Top Tables for 6' & 8' Banquet Tables & Small, Medium and Large Serpentine Tables
- Chair Carts for Champ, Champ Fanback, Revolution, Classic and Comfort folding chairs
- Charger Plate Crates
- Charger Plate Crate Dividers
- Chiavari Chair & Barstools
- Classic Wood Folding Chair Replacement Seat Pads
- Clip Rod Supports
- Coat Tree
- Comfort Wood Folding Chair Replacement Seat Pads
- Contemporary Black Metal Swivel Barstool
- Dinner Plate Crates (Large)
- Dinner Plate Crates (Small)
- Literature Holder
- Pedestal Table Cart for 30" & 36" Round Pedestal Tables
- Pedestal Table (Resin Blow Mold)
- Pedestal Table (Wood)
- Pole Easel
- Revolution Non-Wood Folding Chair Replacement Seat Pad
- Round Table Cart for 48", 60" and 72" Round Folding Tables
- Sign Holders
- Stanchions



Product Solutions That Build Your Business



## U.S. Distribution Center

4495 East Wall Street,  
Unit #105/106  
Ontario, California  
91761

TF 1-888-250-3113

P 909-390-5744

F 909-390-5748

To request additional information on our products, services, website etc.

**[info@midaseventsupply.com](mailto:info@midaseventsupply.com)**

For sales assistance for new orders or inquiries

**[sales@midaseventsupply.com](mailto:sales@midaseventsupply.com)**

For customer service assistance on existing orders

**[service@midaseventsupply.com](mailto:service@midaseventsupply.com)**

To request an RMA (return merchandise authorization)

**[returns@midaseventsupply.com](mailto:returns@midaseventsupply.com)**

**[www.midaseventsupply.com](http://www.midaseventsupply.com)**

